

NEO and TRINITY meet JUNG at PRIME TOWER ZURICH

Myriam Thyes, 2014-2019, 6 digital prints, 180 x 100 cm each,
c-print on Epson Enhanced Synthetic Paper.

In the movie THE MATRIX, the young bearers of hope, Neo and Trinity, are flying, falling, clambering, fighting and making telepho-ne-calls. The heroes of the Matrix are on the telephone whenever they are located in the virtual world and looking for contact to the real (underground) world. Also, they are mostly in the act of fle-ing, on a hunt or in combat. All this can be read as a metaphor for a performance society of mediated communication and pres-sure of time, especially distinctive in present Zurich. Feelings and empathy are less cultivated than rational planning and efficient work. The inner contact between emotions and success oriented thinking often gets lost.

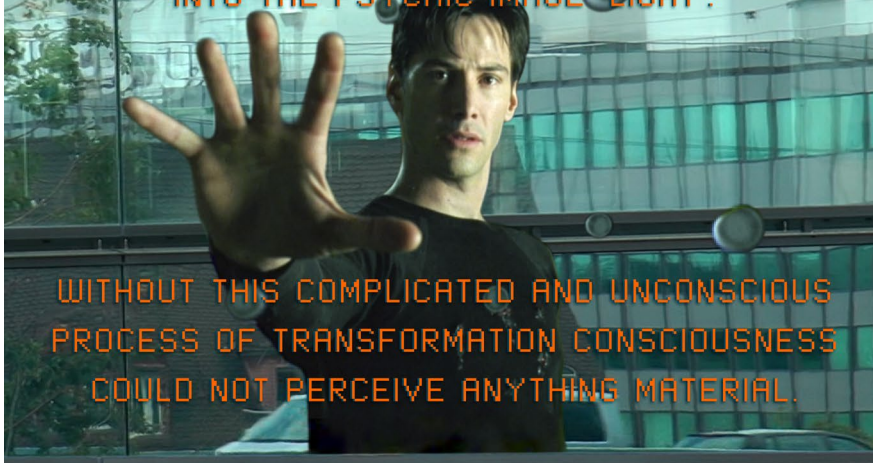
One symbol of this international and economically highly efficient city is the skyscraper „Prime Tower“, the highest business building of Zurich. Details of the Prime Tower facade and views out of it (including its own shadow on the view outside) are combined with portraits of Trinity and Neo. Their facial traits betray stress, concen-tration and tension.

Quotations from the work of Carl Gustav Jung (from 'The Real and the Surreal', a chapter in 'Structure and Dynamics of the Psyche', 1932) augment the images and comment in a surprisingly up-to-date manner human perception and life conditions which apply even more to modern technological societies.

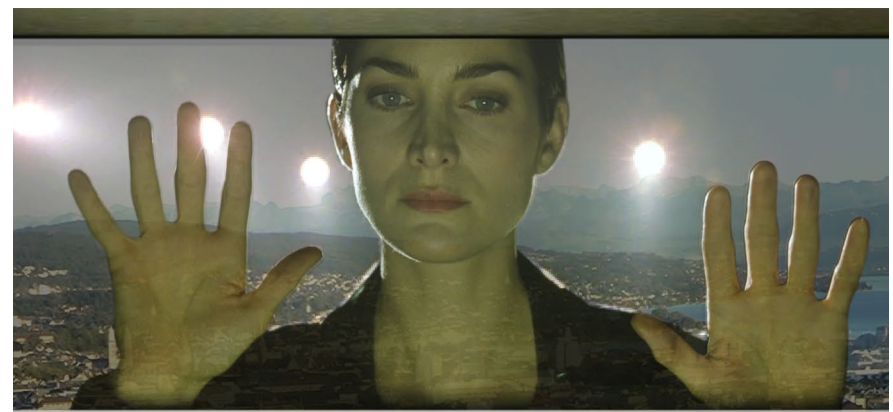




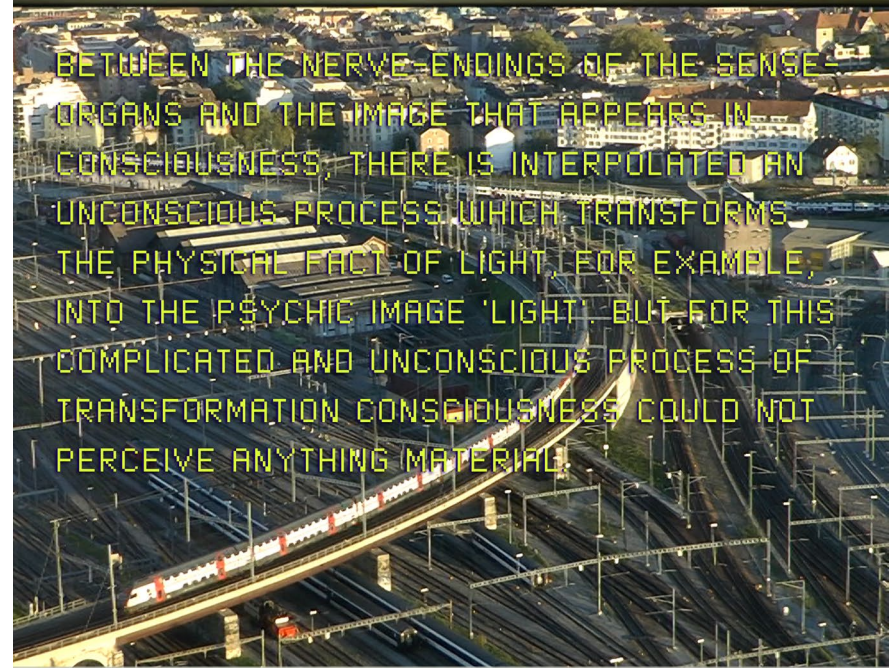
BETWEEN THE NERVE-ENDINGS OF THE SENSE-ORGANS AND THE IMAGE THAT APPEARS IN CONSCIOUSNESS, THERE IS INTERPOLATED AN UNCONSCIOUS PROCESS WHICH TRANSFORMS THE PHYSICAL FACT OF LIGHT, FOR EXAMPLE, INTO THE PSYCHIC IMAGE 'LIGHT'.

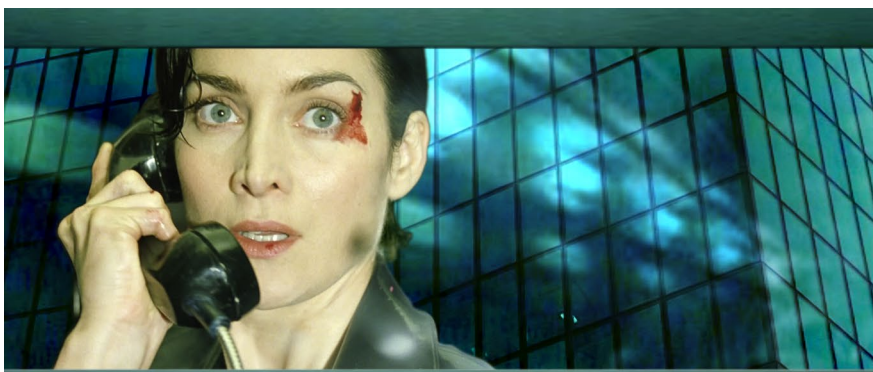


WITHOUT THIS COMPLICATED AND UNCONSCIOUS PROCESS OF TRANSFORMATION CONSCIOUSNESS COULD NOT PERCEIVE ANYTHING MATERIAL.



BETWEEN THE NERVE-ENDINGS OF THE SENSE-ORGANS AND THE IMAGE THAT APPEARS IN CONSCIOUSNESS, THERE IS INTERPOLATED AN UNCONSCIOUS PROCESS WHICH TRANSFORMS THE PHYSICAL FACT OF LIGHT, FOR EXAMPLE, INTO THE PSYCHIC IMAGE 'LIGHT' BUT FOR THIS COMPLICATED AND UNCONSCIOUS PROCESS OF TRANSFORMATION CONSCIOUSNESS COULD NOT PERCEIVE ANYTHING MATERIAL.



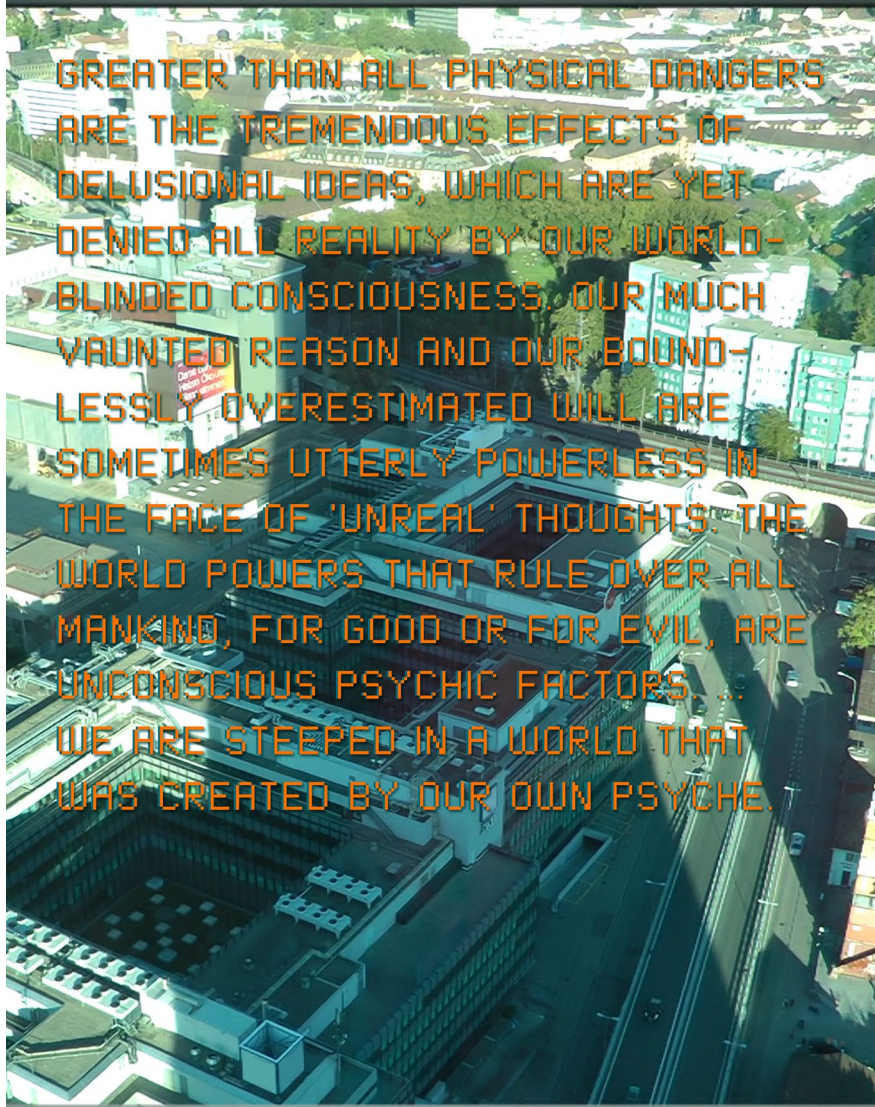


...THAT WHAT APPEARS TO US AS IMMEDIATE REALITY CONSISTS OF CAREFULLY PROCESSED IMAGES, AND THAT, FURTHERMORE, WE LIVE IMMEDIATELY ONLY IN A WORLD OF IMAGES. FAR FROM BEING A MATERIAL WORLD, THIS IS A PSYCHIC WORLD, WHICH ALLOWS US TO MAKE ONLY INDIRECT AND HYPOTHETICAL INFERENCES ABOUT THE REAL NATURE OF MATTER. THE PSYCHIC ALONE HAS IMMEDIATE REALITY.

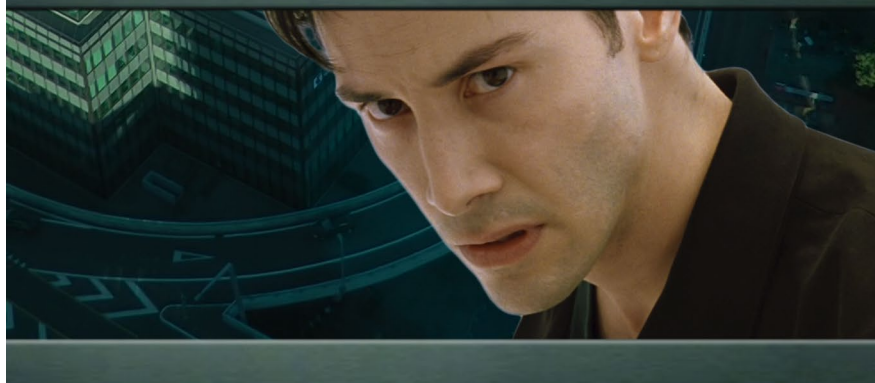


...THAT WHAT APPEARS TO US AS IMMEDIATE REALITY CONSISTS OF CAREFULLY PROCESSED IMAGES, AND THAT, FURTHERMORE, WE LIVE IMMEDIATELY ONLY IN A WORLD OF IMAGES. FAR FROM BEING A MATERIAL WORLD, THIS IS A PSYCHIC WORLD, WHICH ALLOWS US TO MAKE ONLY INDIRECT AND HYPOTHETICAL INFERENCES ABOUT THE REAL NATURE OF MATTER. THE PSYCHIC ALONE HAS IMMEDIATE REALITY.





GREATER THAN ALL PHYSICAL DANGERS
ARE THE TREMENDOUS EFFECTS OF
DELUSIONAL IDEAS, WHICH ARE YET
DENIED ALL REALITY BY OUR WORLD-
BLINDED CONSCIOUSNESS. OUR MUCH
VAUNTED REASON AND OUR BOUND-
LESSLY OVERESTIMATED WILL ARE
SOMETIMES UTTERLY POWERLESS IN
THE FACE OF 'UNREAL' THOUGHTS. THE
WORLD POWERS THAT RULE OVER ALL
MANKIND, FOR GOOD OR FOR EVIL, ARE
UNCONSCIOUS PSYCHIC FACTORS. ...
WE ARE STEEPED IN A WORLD THAT
WAS CREATED BY OUR OWN PSYCHE.



GREATER THAN ALL PHYSICAL DANGERS
ARE THE TREMENDOUS EFFECTS OF DELUSIONAL IDEAS,
WHICH ARE YET DENIED ALL REALITY BY OUR
WORLD-BLINDED CONSCIOUSNESS. OUR MUCH
VAUNTED REASON AND OUR BOUNDLESSLY
OVERESTIMATED WILL ARE SOMETIMES UTTERLY
POWERLESS IN THE FACE OF 'UNREAL' THOUGHTS.

THE WORLD POWERS THAT RULE OVER ALL
MANKIND, FOR GOOD OR FOR EVIL, ARE
UNCONSCIOUS PSYCHIC FACTORS. ... WE ARE
STEPPED IN A WORLD THAT WAS CREATED BY
OUR OWN PSYCHE.

